

# MIT Pressure gauges filled with dampening liquid

Ø 63 (2 1/2") - 100 (4") mm

Stainless steel case, Ø 63 mm and 100 mm (MIT3, MIT5)

Filled with dampening liquid

Anti-vibrating system

Conform to EN 837-1 standard, Pressure Directive PED 97/23/CE

Rugged, glycerin filled pressure gauges, especially designed for hydraulic systems, pumps, compressors, diesel engines, agricultural equipment, public works, machine tools... Excellent resistance to vibrations and corrosive ambient conditions. Can be used on all gas and liquid systems compatible with cupreous metals of the sensing element and connection.



## Specifications (20°C)

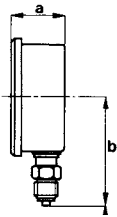
<b>Ranges</b>	MIT3-MIT5 : from -1...+ 0 to 0...+ 1000 bar Scale for vacuum and compound (pressure and vacuum). See standard graduations overleaf.
<b>Working pressure</b>	steady : 75% of full scale value short time : 100% of full scale value
<b>Accuracy</b>	Class 2,5%
<b>Degree of protection</b>	according to NF EN 60529 IP54 (Ø 63) : MIT3 IP65 (Ø 100) : MIT5
<b>Sensing element</b>	Cupreous metal Bourdon tube.
<b>Connection</b>	Brass. 14 mm hexagonal (Ø 63 mm). 21 mm hexagonal (Ø 100 mm).
<b>Thread</b>	G 1/4 (Ø 2 63 mm). G 1/2 (Ø 100 mm).
<b>Tube-connection assembly</b>	Welding.
<b>Gauge working Temperature</b>	process fluid: -10 ... 70°C
<b>Temperature error</b>	additional error when temperature of the pressure element deviates from +20°C (68°F) ±0.4% for every 10°C (18°F) rising or falling. Percentage of span.
<b>Case and bezel ring</b>	1.4301 (AISI 304) st. sheet. Bezel ring crimped on case (MIT).
<b>Window</b>	Unbreakable polycarbonate (MIT).
<b>Dial</b>	Aluminium alloy, black figures and graduations on white background.
<b>Pointer</b>	Aluminium alloy, balanced, black painted.
<b>Movement</b>	Brass.

## Options

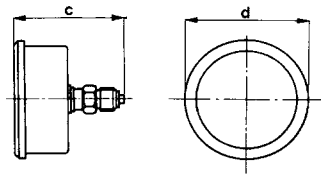
<b>MIT3</b>
Nickel plated connection.
Brazed tube to withstand 200°C fluid.
Special dials and graduations.

## Dimensions (mm) - Types of mounting

Type D



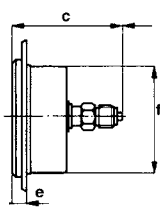
Type F



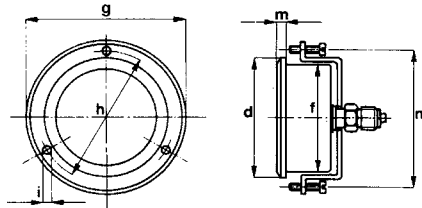
All dimensions in mm

	MIT5	MIT3
Ø	100	63
a	35	30
b	87	57
c		58
d	109	68
e		7
f	98,5	63
g		88
h		78
i		6,5x4,5
m	8,5	
n	108	

Type B



Type G



Weight in grams

	MIT5	MIT3
Ø	100	63
B		218
D	570	200
F	604	202
G	665	

## Codification - MIT

		Mxxxxx2Bxx
<b>Model</b>	1'...3' digit	MIT
Pressure gauges		
<b>Nominal diameter</b>	4' digit	
Ø 63 mm		3
Ø 100 mm		5
<b>Types of mounting and connection position</b>	5' digit	
back connection, front flange		B
bottom connection		D
back connection		F
back connection and ring		G
<b>Pressure connection</b>	6' digit	
G 1/4 (for Ø 63)		2
G 1/2 (for Ø 100)		3
<b>Liquid filling</b>	7' digit	
BH2 filling		2
<b>Unit of measurement</b>	8' digit	
bar		B
<b>Pressure ranges</b>	9'...10' digit	
See codes in table		xx

Ranges

code	Ranges bar		MIT3	MIT5
59	-1	+ 0	X	
15	0	+ 1	X	
16	0	+ 1.6	X	
18	0	+ 2.5	X	
19	0	+ 4	X	
20	0	+ 6	X	X
22	0	+ 10	X	X
24	0	+ 16	X	X
26	0	+ 25	X	X
27	0	+ 40	X	X
29	0	+ 60	X	X
31	0	+ 100	X	X
33	0	+ 160	X	X
35	0	+ 250	X	X
38	0	+ 400	X	X
39	0	+ 600	X	X

UK/10-2008 This data sheet may only be reproduced in full